

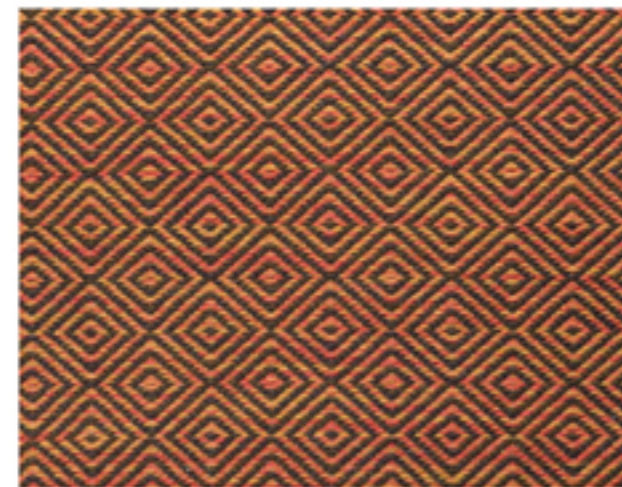
GROUND BREAKERS

AS A QUIET COMPLEMENT OR A STRONG STATEMENT, WE'VE COMPILED THE LATEST RUG DESIGNS TO ANCHOR A ROOM

PRODUCED BY O.J. CAREY AND MARY FITZGERALD

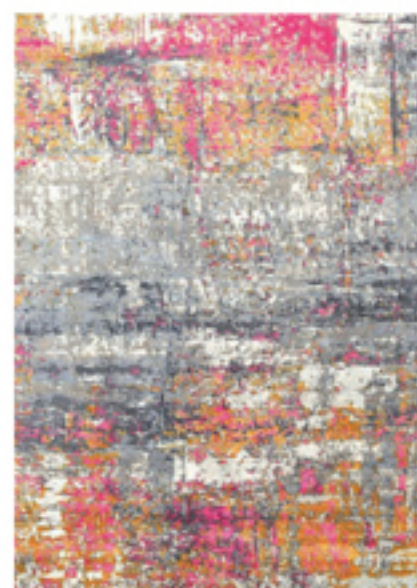


RUG PORTFOLIO



(THIS PAGE, CLOCKWISE FROM TOP LEFT) Los Angeles street artist Spencer "Mar" Guilburt collaborated with **Kyle Bunting** to create the Means Mar collection. The artist's vibrant work is showcased in a hair-on-hide medium. *Through Edelman Leather, D&D, NYC, edelmanleather.com, kylebunting.com.* The exaggerated prints of Geometrics I by **Crosby Street Studios** include Sterling in Wes, shown here. The collection features bold zigzags, pentagonal and hexagonal shapes, rounds, diamonds, triangles and stripes. NYC, *crosbystreetstudios.com.* Hand-woven from blended Tibetan wool that is hand spun and dyed with natural vegetable dyes, the Atlas rug from **C&C Milano** displays depth with distinctive variations of color and texture. NYC, *cac-milano.com.* The painterly style of **Lillian August's** Smudge multi rug is made in Nepal in a blend of 80 percent Tibetan wool and 20 percent silk in 100 knots per inch. *Norwalk, lillianaugust.com.* Celebrating repetition and organic patterns, Cupid from the Primitive Collection for **Carlisle** is handcrafted of shorn New Zealand wool. NYC, *wideplankflooring.com.* Graphically striking, the **Elizabeth Eakins** Gooseeye motif is composed of New Zealand wool yarn. The reversible rug is available in multiple patterns and custom colors. *Norwalk, elizabeteakins.com.*

BOLD + BEAUTIFUL



(THIS PAGE, CLOCKWISE FROM TOP) A multicolor vortex pattern lends an impressionistic quality to the Alexia rug by **Felzy** in hand-tufted polypropylene looped pile for softness and durability. NYC, *felzy.com.* Franz, a pixel motif in black and white, is a hand-woven flat-weave wool dhurrie made exclusively for **Mitchell Gold + Bob Williams**. *Greenwich, mgbwhome.com.* The Impressions Collection by **J.D. Staron** is designer Jakub Staron's play on light and shadows. The Tibetan weaves are crafted in wool, silk and nettle. *Stamford, jdstaron.com.* Berber Hills, from **Doris Leslie Blau**, is designed by Kim Alexandruik. The colors and patterns of the hand-woven cotton flat weave are a blend of modern and primitive, inspired by the mountainous landscape of Africa. NYC, *dorisleleblau.com.*





SUBTLE + SOPHISTICATED



(THIS PAGE, CLOCKWISE FROM TOP LEFT) Basho, meaning, "place" in Japanese, is a new grouping of rugs from **Scott Group Studio**, including Lykke in striations of soft shades of beige, gray, sand and ivory. *D&D, NYC, scottgroupstudio.com*. The Deco-inspired Deca rug in marled silver, designed by Ben Soleimani for **RH**, pairs hand-knotted marled loops and silken pile for waves of texture and a tonal effect. *Greenwich, rh.com*. Based on the tiled ceilings of the Imperial Bazaar in Isfahan's Naqsh-e Jahan Square, **Orley Shabahang's** Mosaic collection includes the wool Bazaar rug, shown here. *NYC, orleyshabahang.com*. Katja is a new hand-tufted wool rug by Swedish designer Maja Johansson Starander for **Kasthall**. The dramatic texture is counterbalanced with a subdued, tonal quality. *NYDC, NYC, kasthallusa.com*. Together, **Farrow & Ball** and **The Rug Company** have created a range of handloomed rugs in 12 colorways. The subtle blush of the Portland Pink rug is crafted in Nepal of hand-spun Tibetan wool with a silk border. *NYC, therugcompany.com*.



(THIS PAGE, CLOCKWISE FROM ABOVE LEFT) Combining soumak weaving and the Berber knot, the monochromatic design of **Armadillo & Co.**'s Ghan rug in Ecrú hails from the Latitude collection. *armadillo-co.com*. Reminiscent of pen-and-ink sketches, the Retro Trace rug in silver streak features contoured lines in ivory and silver. From the Modern collection by **Tufenkian**, bamboo silk accents add a touch of shimmer. *NYC, tufenkian.com*. **Warp & Weft's** Planar rug is a new collaboration with Yabu Pushelberg. The Grid collection, in hand-dyed wool and lustrous silk, is one of 12 designs with variations on the theme of urban topography. *D&D, NYC, warpandweft.com*. **Stark's** Lazlo Mystic rug exhibits deep shadows and organic lines in a velvety texture and metallic sheen, achieved by hand-knotting pure silk. *Stamford, starkcarpet.com*. Hand-knotted and woven in Kathmandu, Nepal, on a vertical loom, Mooring by **Mark Inc.** can be ordered in custom sizes and colors. Fibers of wool and silk create the dimensional hatch pattern. *Greenwich, markinc carpets.com*. East River, by abstract artist Joseph La Piana for **Patterson Flynn Martin**, captures the fluidity of water in a textural hand-tufted nylon. Shown in the Dune colorway. *D&D, NYC, pattersonflynnmartin.com*.

