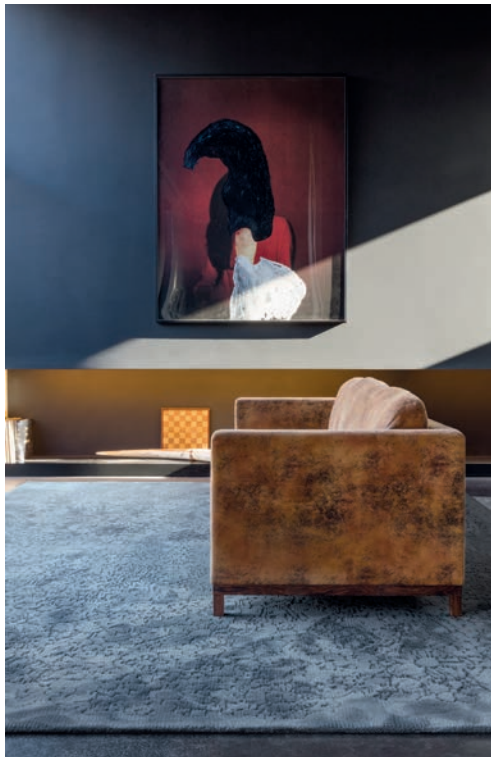


flooring

warp & weft

Sandra Atakora, a master's student in industrial design at Pratt, had long been enchanted by turn-of-the-century Danish artist Michael Ancher's swooping *A Stroll on the Beach*. Her wool interpretation, **Stroll**, translates the 1896 canvas's soft pastels and its striking interplay of sun and shadow into a 6-by-8-foot showstopper. warpandweft.com. **circle 636**



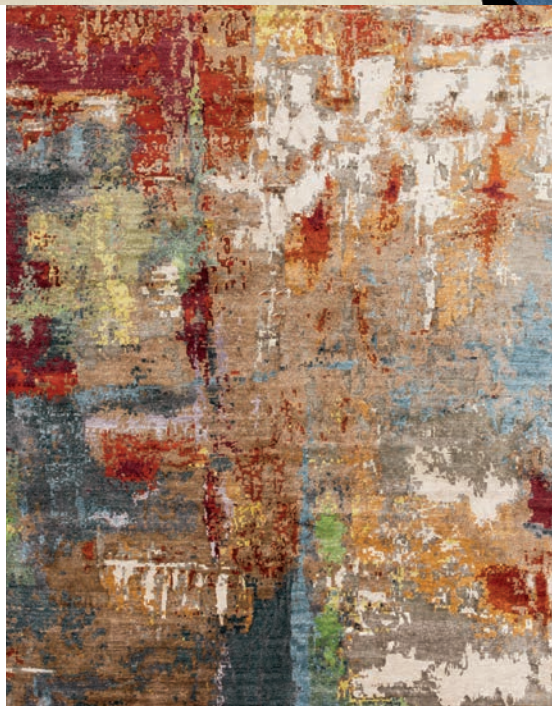
limited edition

Any room will spring to life with **Maestro Bloom**, a botanical beauty specifiable as carpeting or a custom area rug. Rendered in 50 percent wool and 50 percent silk, it's traditionally tufted with a 15mm pile height. The zinc-blue colorway here is lustrous—note how the tufted flowers catch the light—while the brighter Tapioca option shimmers in tones of silver and gray. Through Lepere, lepereinc.com. **circle 637**



bungalo

An ideal choice for any room that needs a touch of subtle texture, the 100 percent wool **Wythe Striped** rug comes in a light gray, black, or coral motif against a neutral ground; a thick border of the same color brackets the design for a graphic, space-defining touch. The four sizes range from 2 by 3 to 8 by 10 feet. bungalohome.com. **circle 638**



tufenkian artisan carpets

Jackson Firewood domesticates (but by no means tames) Abstract Expressionist style, bringing the movement's gestural force to the world of floor coverings. The bamboo silk rug's riot of color is a work of art in itself. Offered in seven sizes ranging from 2 by 3 to 12 by 16 feet. tufenkiancarpets.com. **circle 640**



fogia

Note Design Studio's **Land** carpet is topological—delineated by discrete color zones—as well as tropical, boasting shades of pink, coral, and soft blue. (Versions in warm gold and brown or deep pools of darker blue are also offered.) Woven of wool and traced with cotton fringing, it comes in two sizes: 67 by 95 and 78 ¾ by 118 inches. fogia.se. **circle 639** ➤

Go to interiordesign.net for an archive of featured products.