



PATTERNS OF CHANGE

The carpet industry was one of the first hospitality supplier sectors to embrace eco-responsibility and make it look great. Recycled and recyclable fibers have transitioned from their initial earthy palette of olives, browns and grays to a rainbow of hues in dynamic patterns. Now, the feel-good factor is getting even stronger as more and more manufacturers seek certification from GoodWeave, a program aimed at ending child labor throughout the world. In addition to pushing social and environmental agendas, major mills and small artisanal studios are stepping up creatively with rugs and carpets that can take center stage or be customized to fit any vision.



/ 2 /

/ 1 / Milliken Hospitality

www.millikencarpet.com
Apsley House blends overscale damask details with silhouettes. Line can be customized by building patterns layer by layer.

/ 2 / Kim Parker Home

www.kimparker.tv
GoodWeave-certified Mums and Asters is made from 100 percent New Zealand wool and comes in five standard sizes.

/ 3 / Company C

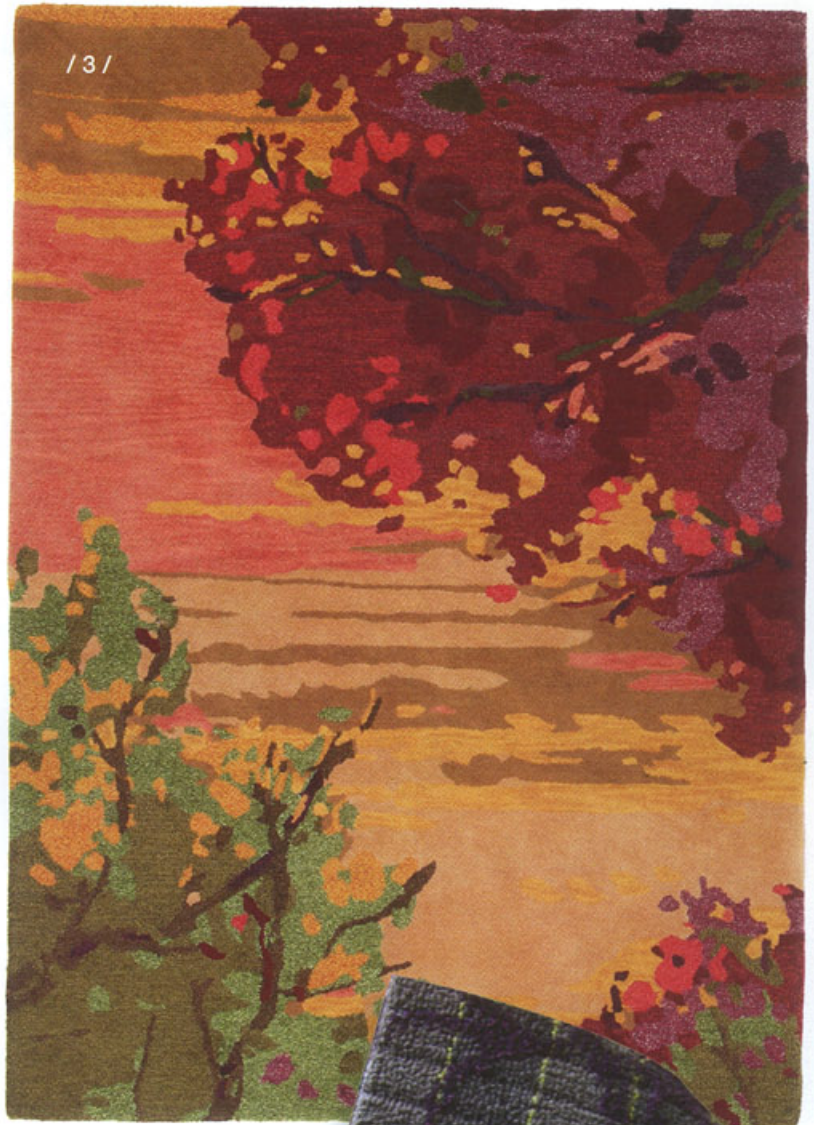
www.companyc.com
Landscape is based on an exclusive oil painting by Jennifer Hansen. The hooked and tufted rug is available in teal or crimson and is GoodWeave certified.

/ 4 / Kravet

www.kravet.com
Wilton Collection includes four new geometric designs in six colors with coordinating borders. Available as area rugs and wall-to-wall carpeting.

/ 5 / Aqua Hospitality Carpets

www.aquahospitality.com
Both the 32- and 36-oz. versions of Splish Splash feature 25 percent recycled pre-consumer content. Nylon carpet also contains an indoor air freshener.



/ 5 /





/ 6 /



/ 7 /



/ 8 /



/ 9 /



/ 10 /

/ 6 / Azru Studio Hope
www.azrustudiohope.org
Handmade in Afghanistan, these wool rugs come in standard sizes from 2-by-3 ft. to 10-by-14 ft.

/ 7 / Warp & Weft
www.warpandweft.com
Versailles Chocolate, part of the Modern Collection, is made from Himalayan wool and Indian mulberry silk. Standard sizes are 9-by-12 ft. and 8-by-11 ft. Custom sizes available.

/ 8 / Shaw Hospitality Group
www.shawhospitalitygroup.com
Global Reason features a 36-in. square repeat. The collection coordinates with other styles and can contribute to LEED certification.

/ 9 / Rosemary Hallgarten
www.rosemaryhallgarten.com
Inspired by the work of British ceramist Janice Tchalenko, Glaze features a mottled pattern constructed of 100 percent wool. Options include fire-retardant treatment.

/ 10 / Madeline Weinrib Atelier
www.madelineweinrib.com
Made from 100 percent New Zealand Wool, Bossa Nova has a 20-ft. maximum width.